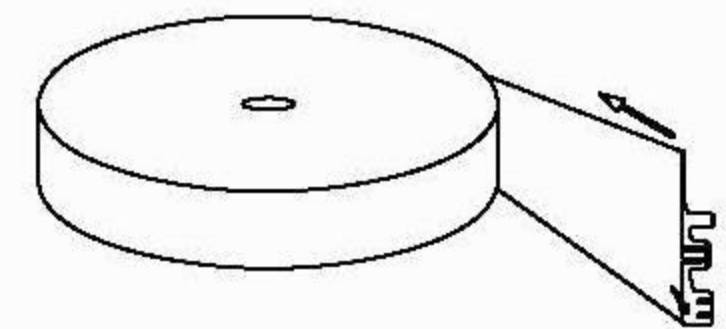
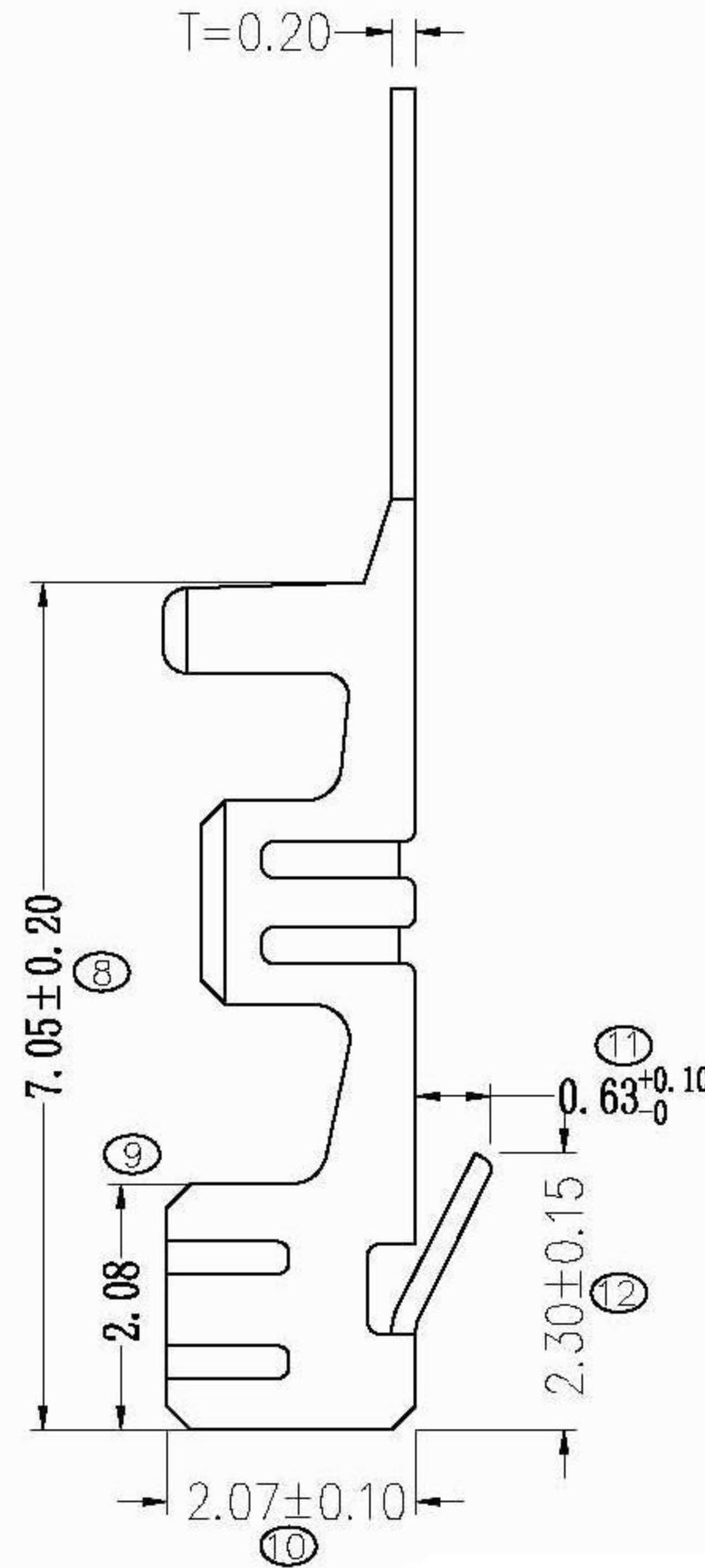
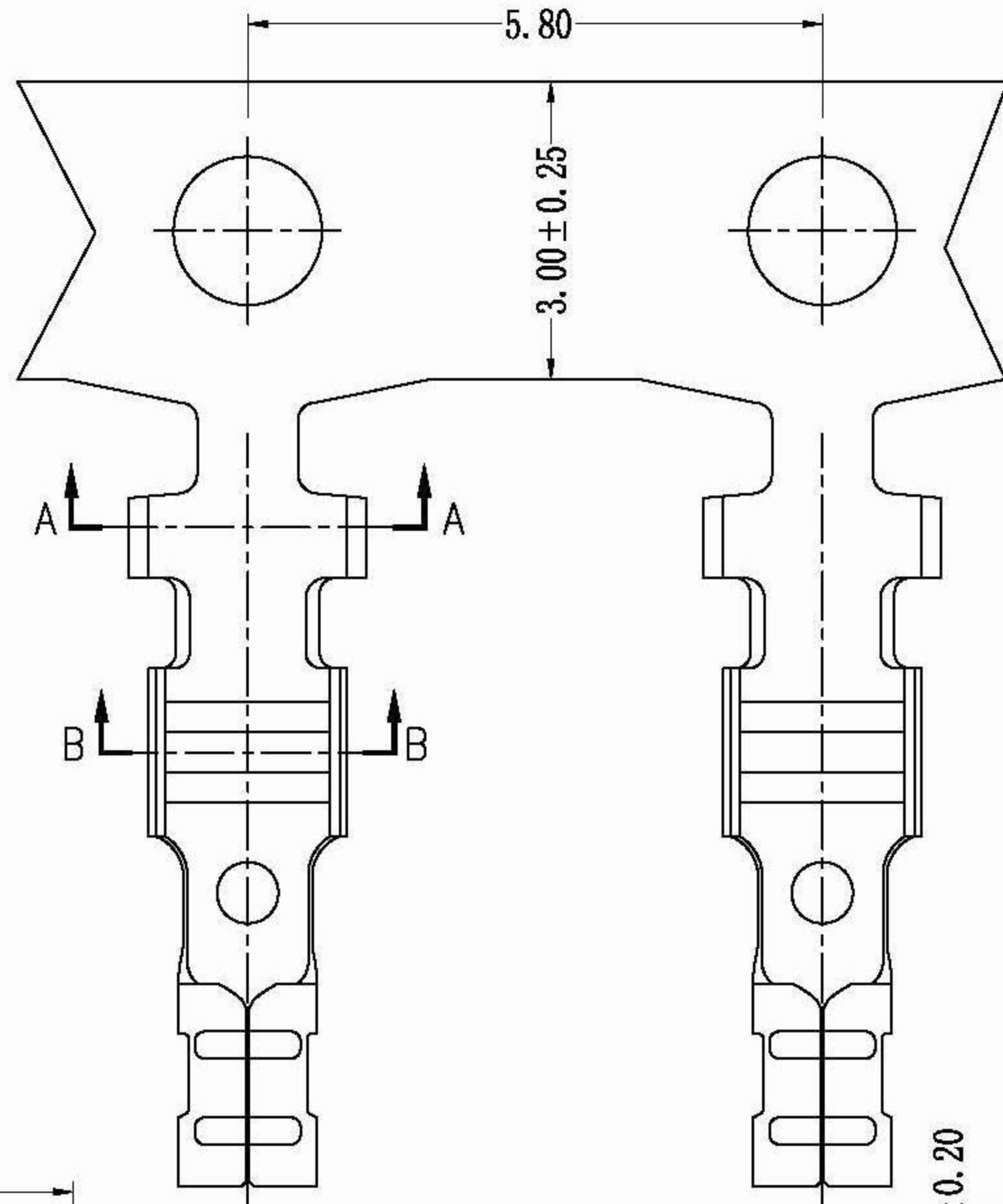
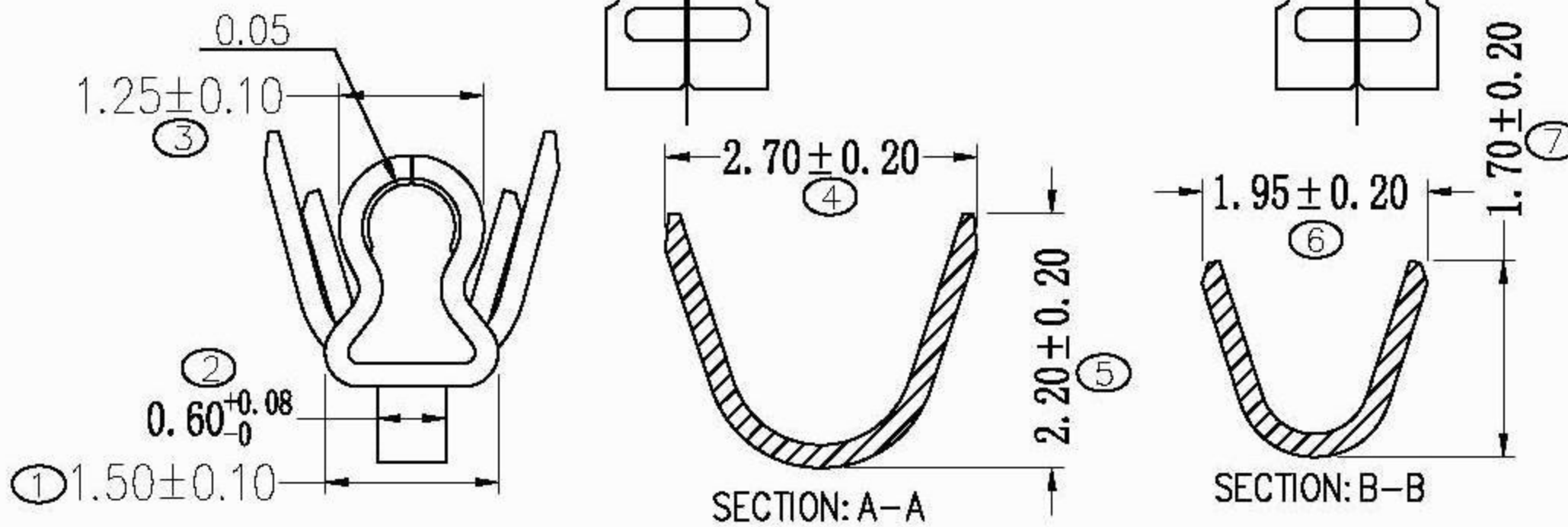


REV.	ECN NO.	DESCRIPTION	DATE	DESIGN
D	NAE08250	依工程图升级版本	2008.12.30	肖勇
E	NAE09045	新增先冲后镀规格	2009.3.13	董荣玫
F	NAE09189	变更料号	2009.09.16	肖勇



电镀后收料方向示意图
(打线开口朝外)



Specifications & Ordering Information:

MATERIALS	WIRE RANGE	INSULATION O.D	FINISH	Qty/reel
Phosphor Bronze	AWG #22-#28	1.90mm(MAX)	Stamping before pating : 30-50u"Ni; whole Sn: 70-120u".	10000
Phosphor Bronze	AWG #22-#28	1.90mm(MAX)	pating before Stamping : 30-50u"Ni; whole Sn: 70-120u".	10000

DIM	TOL	DIM	TOL
X.	/	X°.	/
X.X	±0.25	X.X°	±2°
X.XX	±0.20	X.XX°	±1°
X.XXX	±0.10	X.XXX°	/

GXCON ENTERPRISE CO., LTD			
DRAW NO.	DATE	P/N NO:	DRAW NAME:
DESIGN:	12/30/08'	WF2502PP	MX 2.50 聚磷 Contact
CHECK:		REV. F	SCALE 1:1
REVIEW:		UNIT: mm	SHEET: 1 OF 1